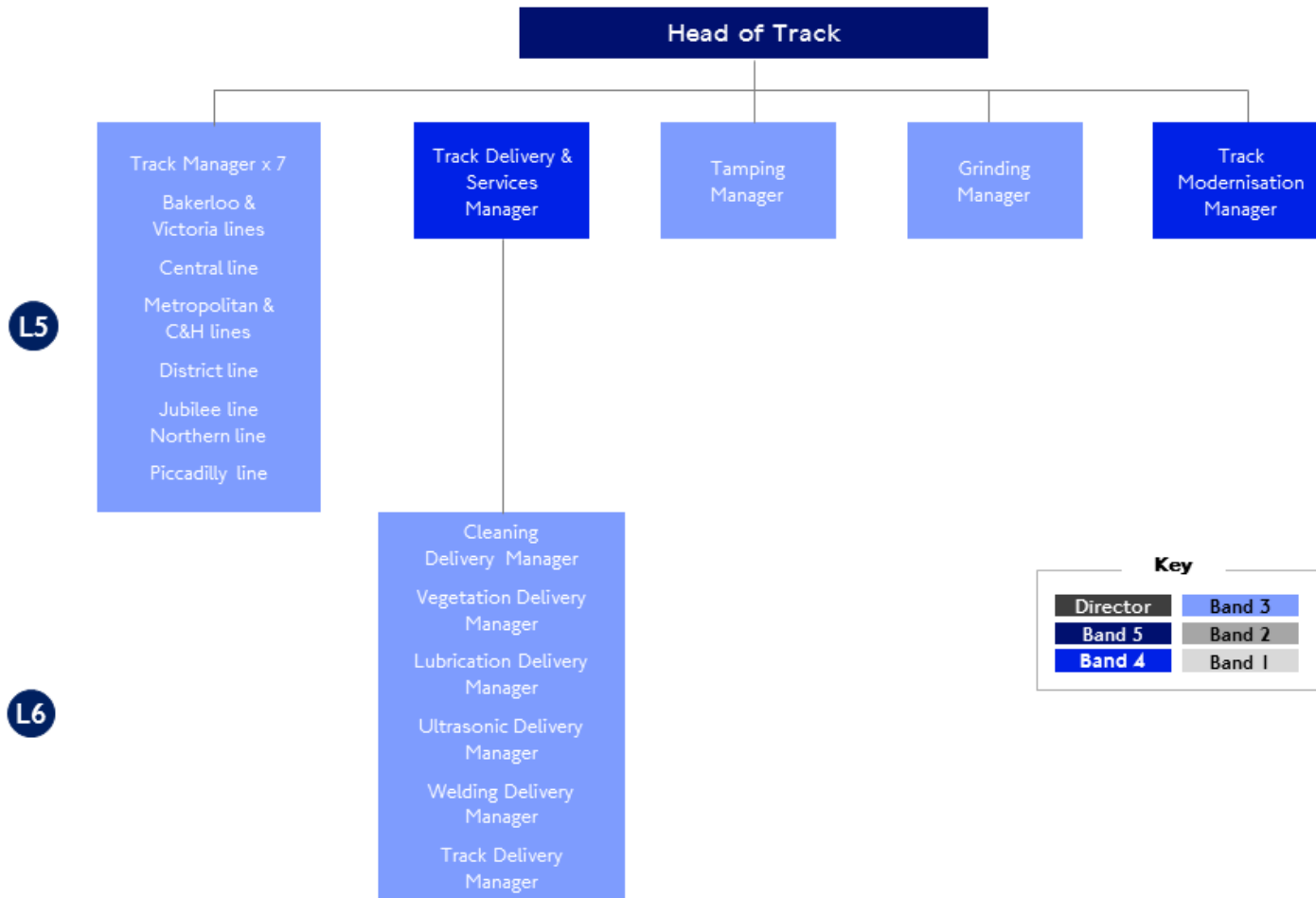


Proposed structure – Track

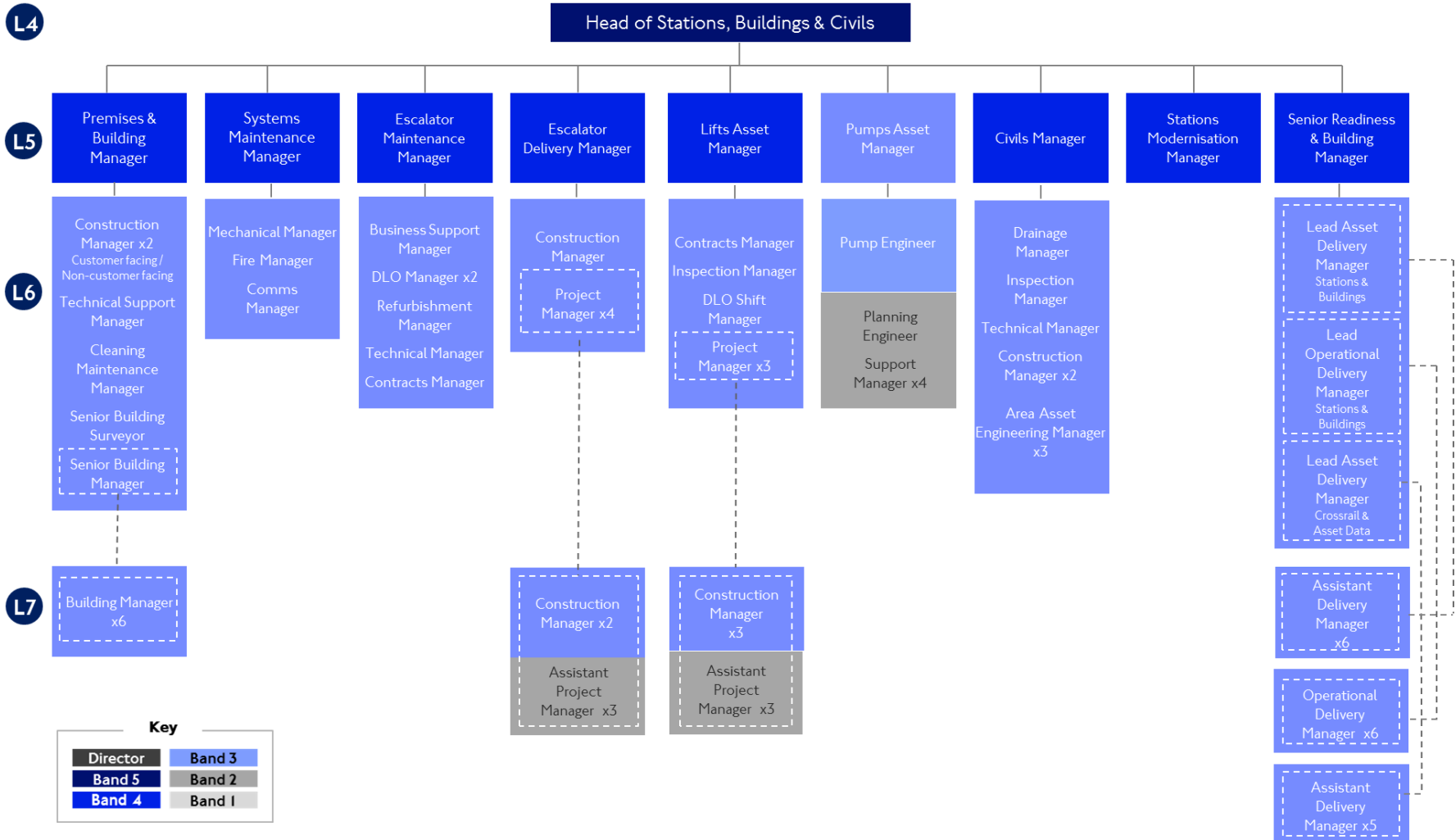


ALL PROPOSALS SUBJECT TO CONSULTATION

The disclosure of this document would, or would be likely to, prejudice the commercial interests of TfL, its subsidiary companies and/or other parties. This document reflects ongoing work and discussions within TfL on options for the future of TfL/LU. It is not intended to reflect or represent any formal TfL/LU views or policy. Its subject matter may relate to issues which would be subject to consultation. Its contents are confidential and should not be disclosed to any unauthorised persons.

EVERY JOURNEY MATTERS

Proposed structure – Stations, Buildings & Civils

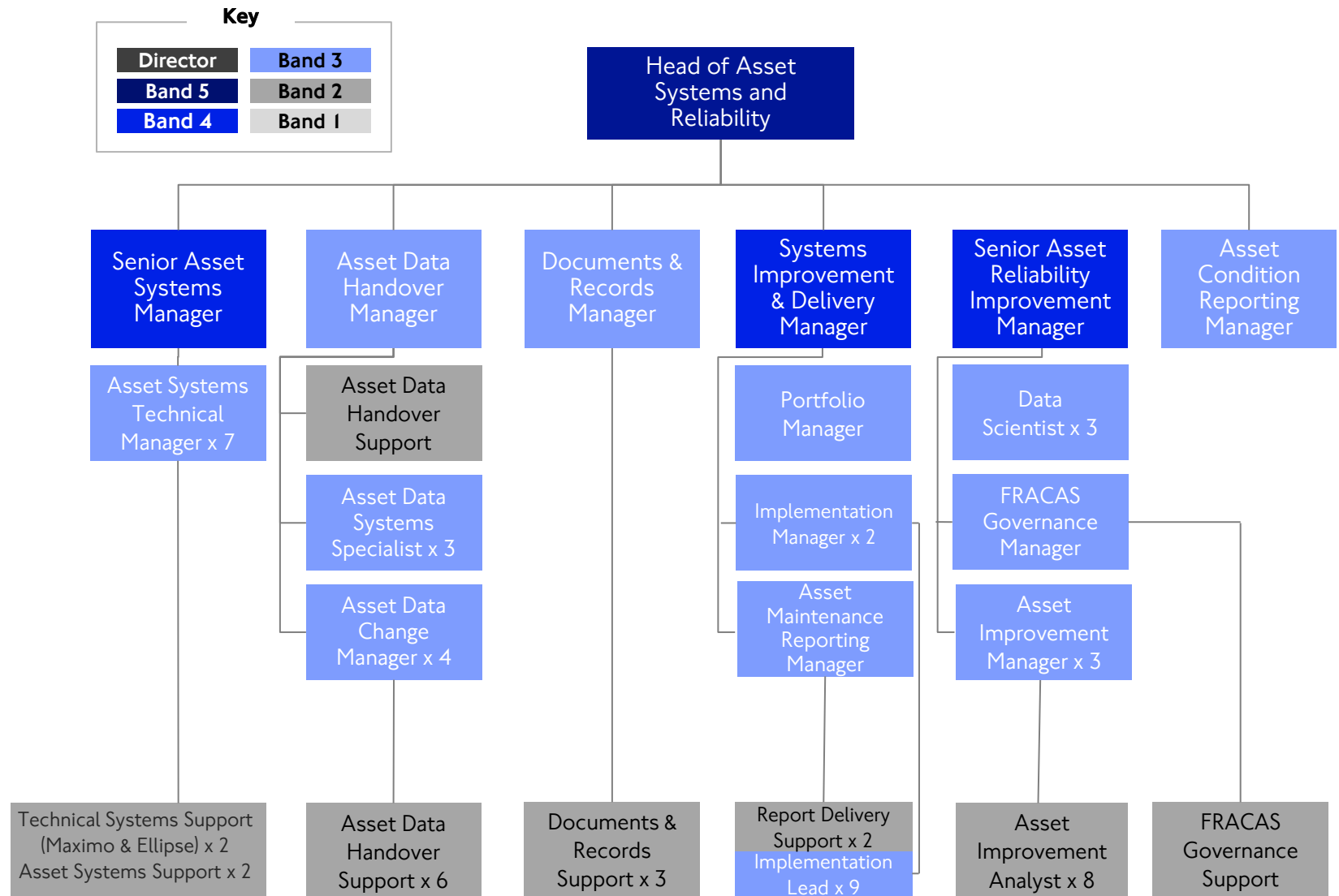


ALL PROPOSALS SUBJECT TO CONSULTATION

The disclosure of this document would, or would be likely to, prejudice the commercial interests of TfL, its subsidiary companies and/or other parties. This document reflects ongoing work and discussions within TfL on options for the future of TfL/LLU. It is not intended to reflect or represent any formal TfL/LLU views or policy. Its subject matter may relate to issues which would be subject to consultation. Its contents are confidential and should not be disclosed to any unauthorised persons.

EVERY JOURNEY MATTERS

Proposed structure – Asset Systems & Reliability



Proposed NP&S Planning structures

L5

Senior Planning Manager – Fleet

L6



L7



Key

Director	Band 3
Band 5	Band 2
Band 4	Band 1

ALL PROPOSALS SUBJECT TO CONSULTATION



The disclosure of this document would, or would be likely to, prejudice the commercial interests of TfL, its subsidiary companies and/or other parties. This document reflects ongoing work and discussions within TfL on options for the future of TfL/LU. It is not intended to reflect or represent any formal TfL/LU views or policy. Its subject matter may relate to issues which would be subject to consultation. Its contents are confidential and should not be disclosed to any unauthorised persons.

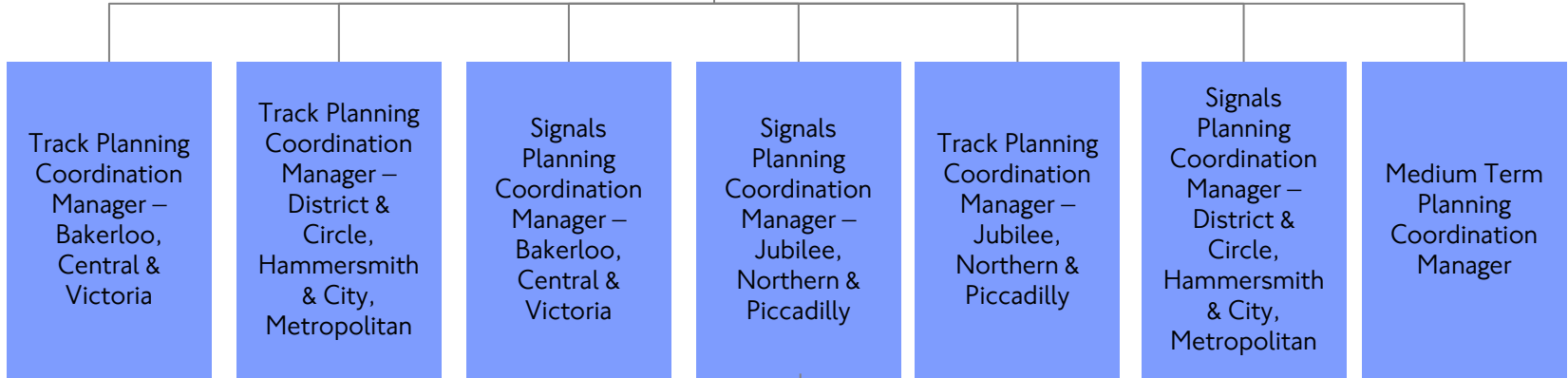
EVERY JOURNEY MATTERS

Proposed NP&S Planning structures

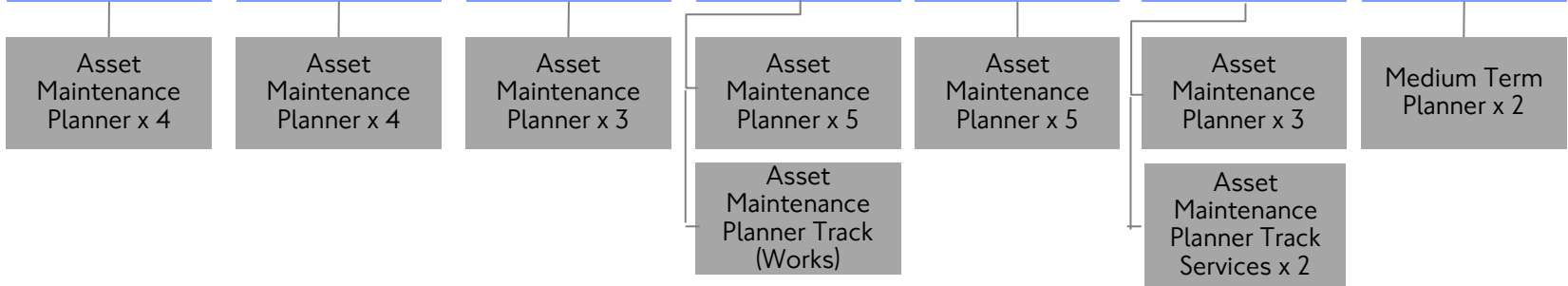
L5

Senior Planning Manager – Track & Signals

L6



L7



Key

Director	Band 3
Band 5	Band 2
Band 4	Band 1

ALL PROPOSALS SUBJECT TO CONSULTATION



The disclosure of this document would, or would be likely to, prejudice the commercial interests of TfL, its subsidiary companies and/or other parties. This document reflects ongoing work and discussions within TfL on options for the future of TfL/LU. It is not intended to reflect or represent any formal TfL/LU views or policy. Its subject matter may relate to issues which would be subject to consultation. Its contents are confidential and should not be disclosed to any unauthorised persons.

Proposed NP&S Planning structures

L5

Senior Planning Manager – Stations, Civils & Power

L6

Civils Planning Coordination Manager

Stations Systems Planning Coordination Manager

Premises Planning Coordination Manager

L&E Planning & Coordination Manager

Medium Term Planning Coordination Manager

P&E Planning Coordination Manager

L7

Asset Maintenance Planner x 4

Asset Maintenance Planner x 2

Asset Maintenance Planner x 2

L&E Delivery Planner

Asset Maintenance Planner x 4

LV Power Maintenance Planner

Electrical Maintenance Planner

HV Power Maintenance Planner

Key

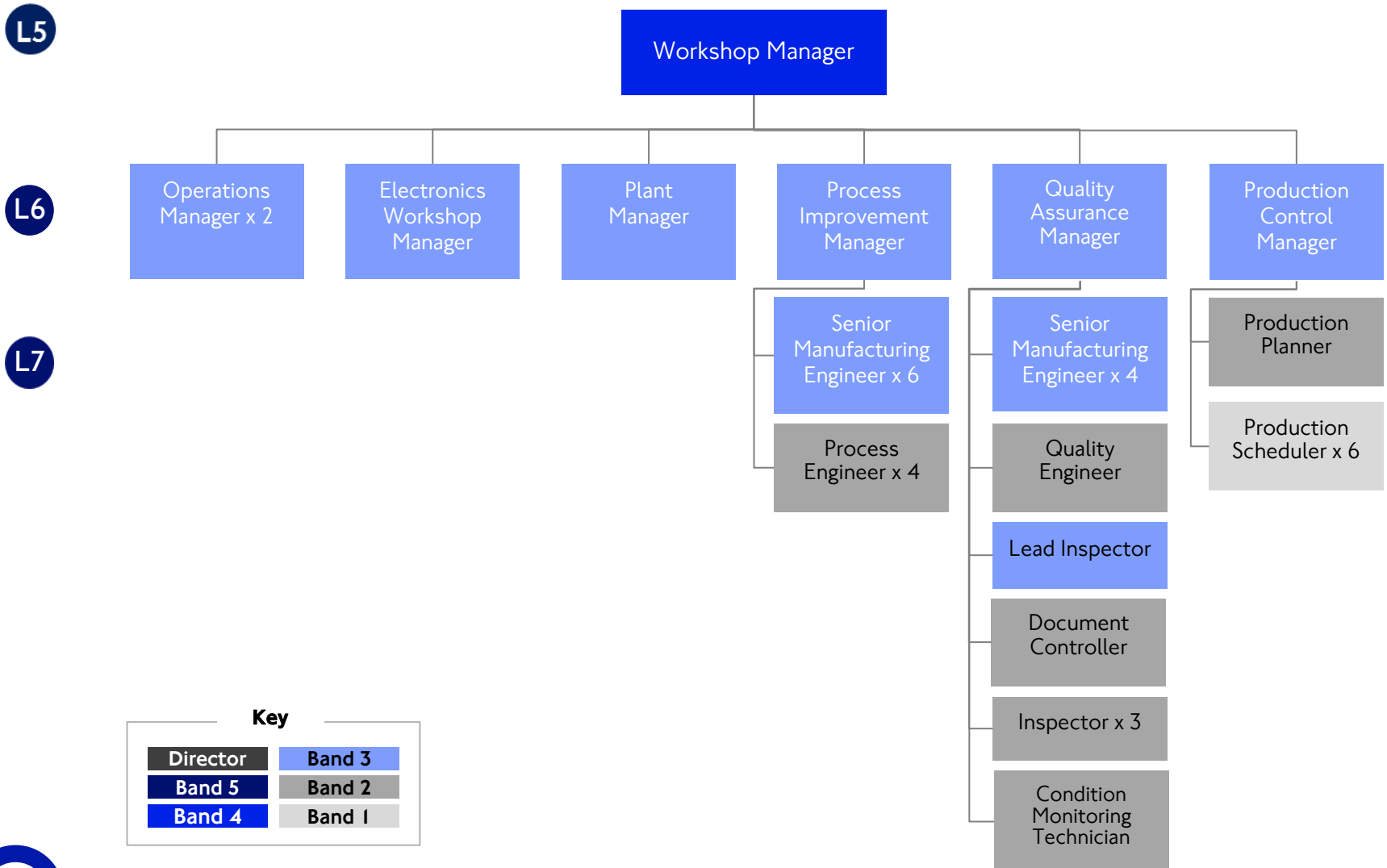
Director	Band 3
Band 5	Band 2
Band 4	Band 1

ALL PROPOSALS SUBJECT TO CONSULTATION

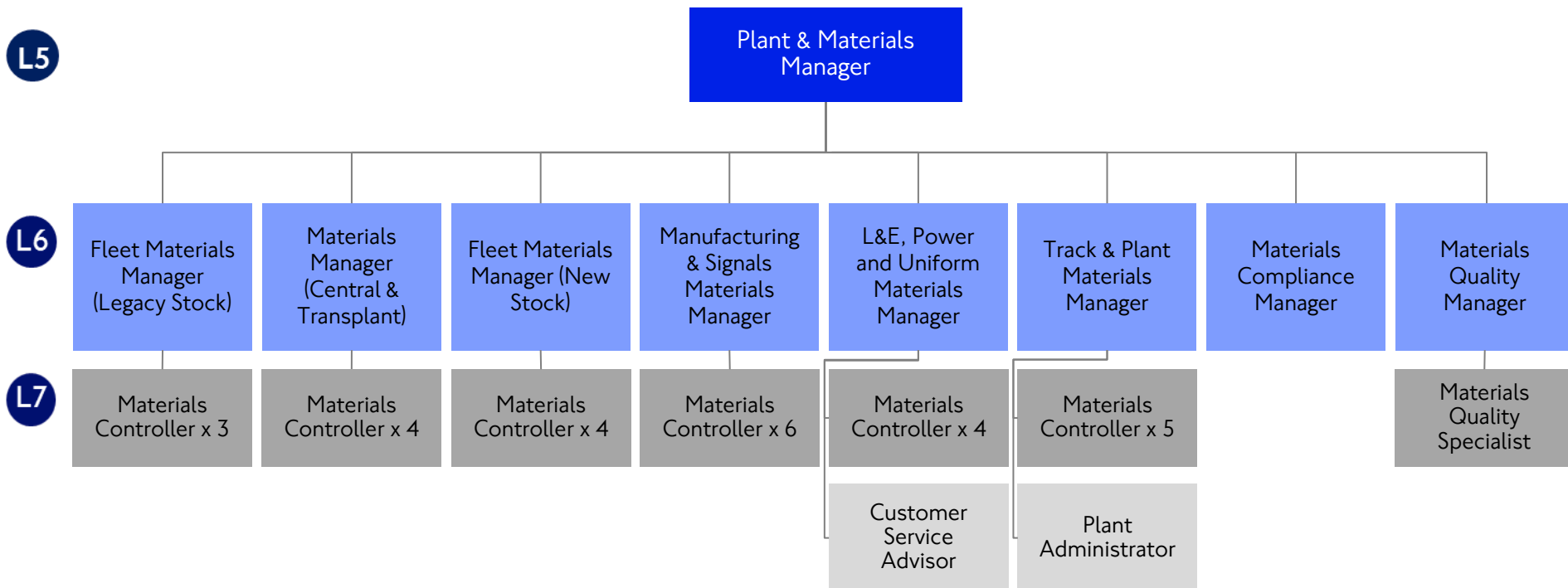


The disclosure of this document would, or would be likely to, prejudice the commercial interests of TfL, its subsidiary companies and/or other parties. This document reflects ongoing work and discussions within TfL on options for the future of TfL/LU. It is not intended to reflect or represent any formal TfL/LU views or policy. Its subject matter may relate to issues which would be subject to consultation. Its contents are confidential and should not be disclosed to any unauthorised persons.

Proposed NP&S Workshop structure



Proposed NP&S Plant and Materials structure



Key

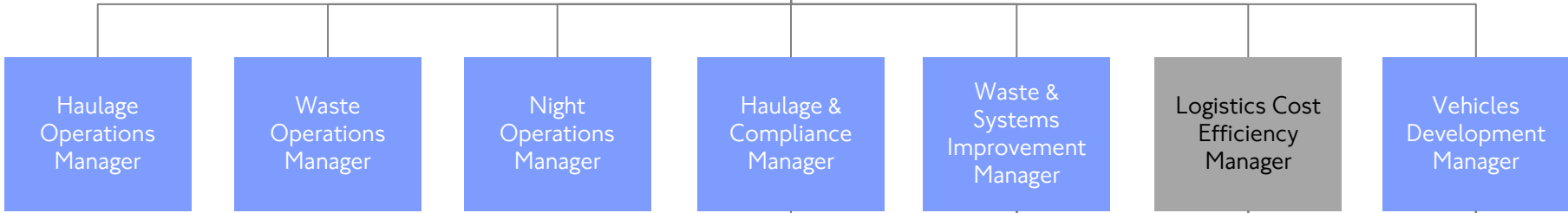
Director	Band 3
Band 5	Band 2
Band 4	Band 1

Proposed NP&S Vehicle Logistics structure

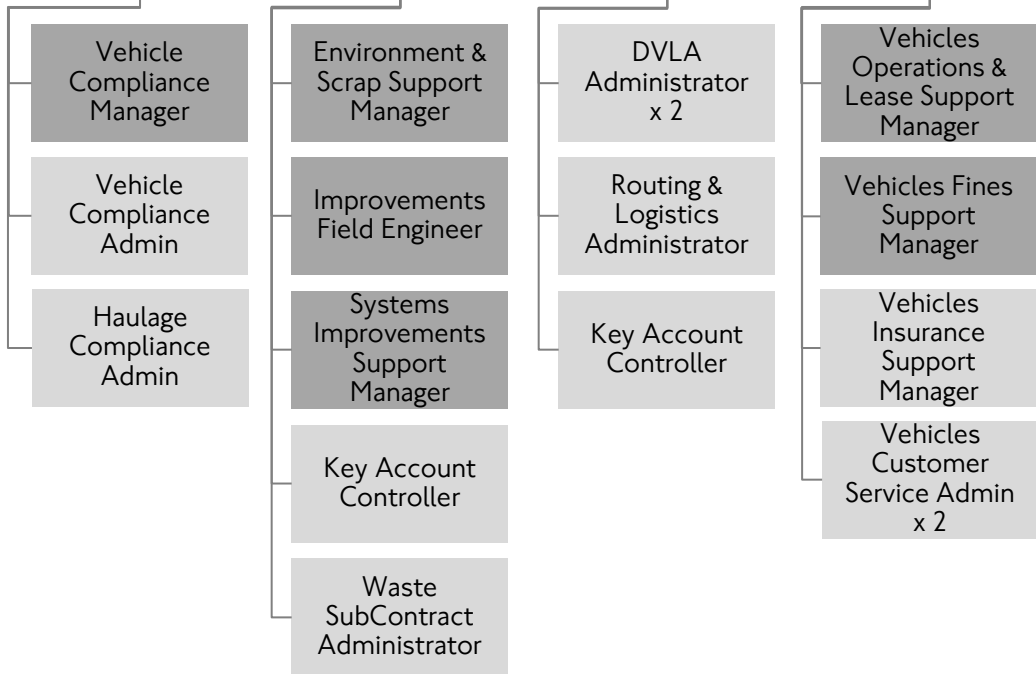
L5

Vehicle Logistics Strategy Manager

L6



L7

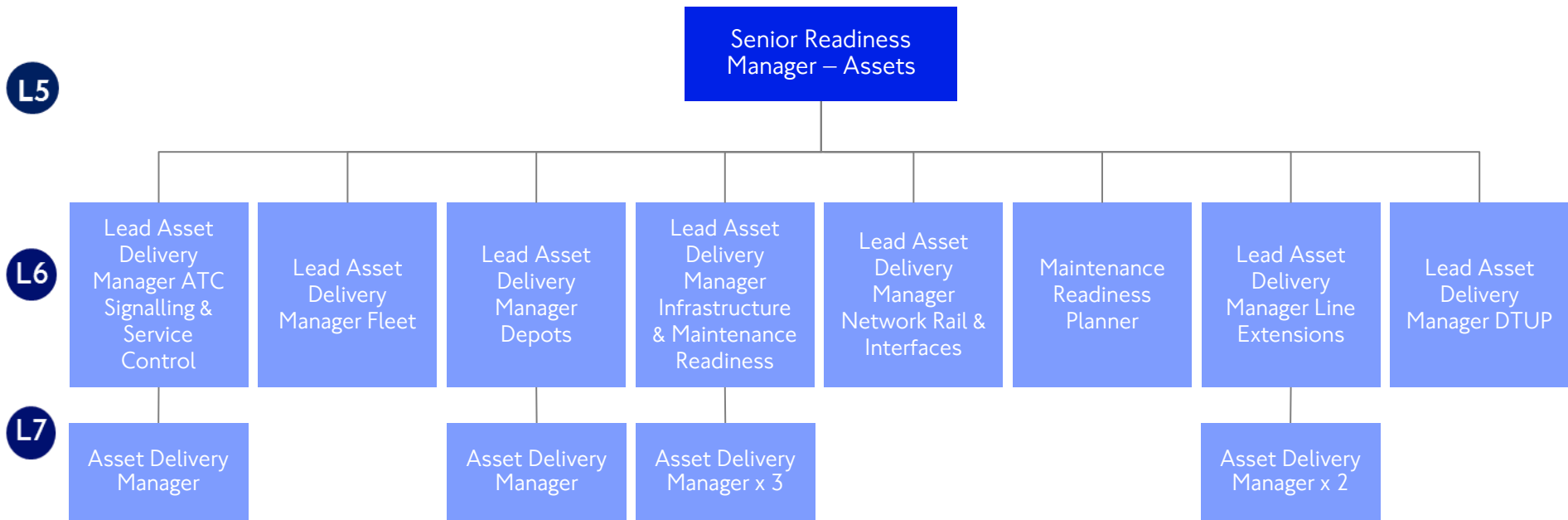


Key

Director	Band 3
Band 5	Band 2
Band 4	Band 1



Proposed NP&S Operational Upgrades structure



Key

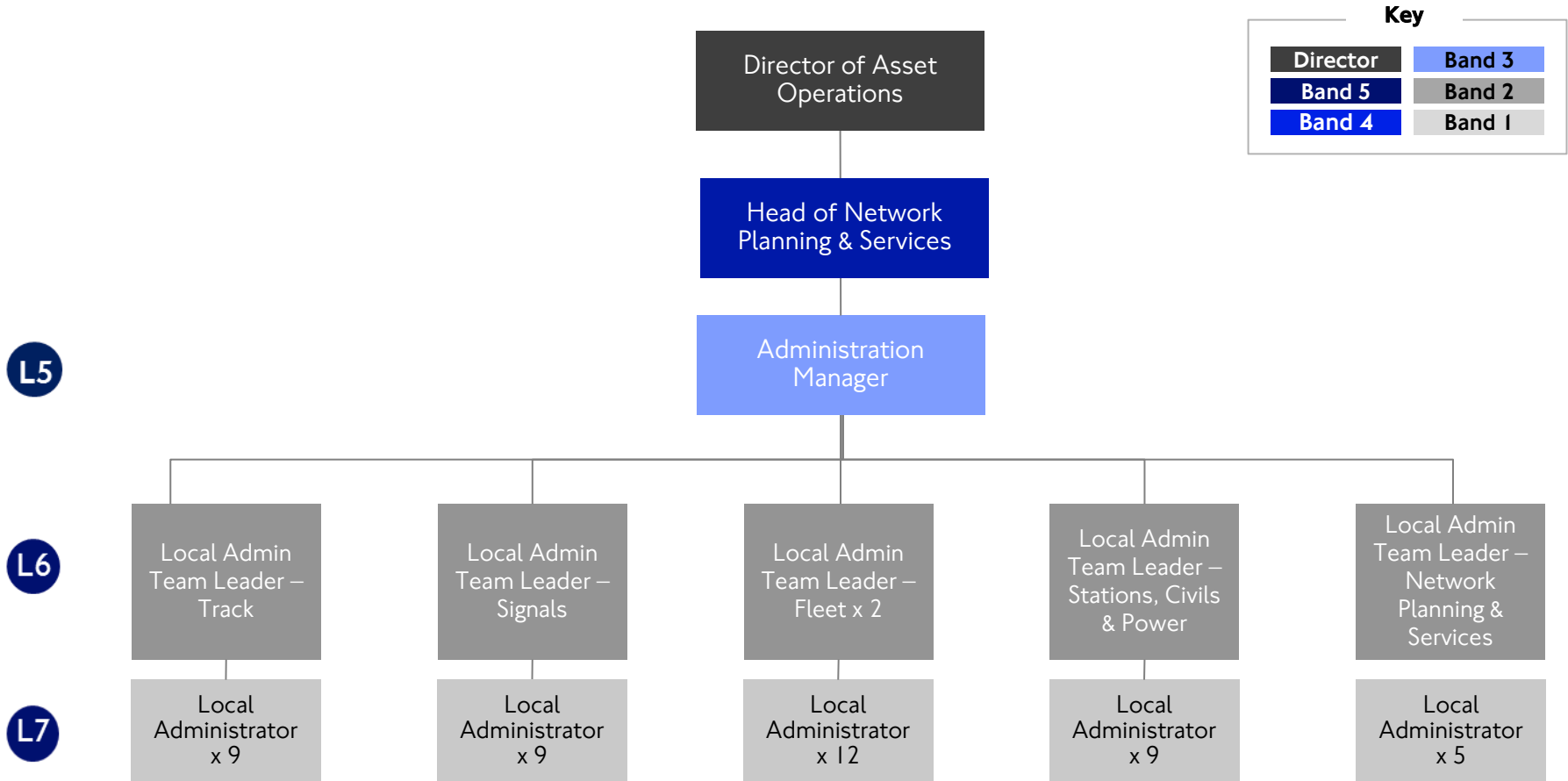
Director	Band 3
Band 5	Band 2
Band 4	Band 1

ALL PROPOSALS SUBJECT TO CONSULTATION



The disclosure of this document would, or would be likely to, prejudice the commercial interests of TfL, its subsidiary companies and/or other parties. This document reflects ongoing work and discussions within TfL on options for the future of TfL/LU. It is not intended to reflect or represent any formal TfL/LU views or policy. Its subject matter may relate to issues which would be subject to consultation. Its contents are confidential and should not be disclosed to any unauthorised persons.

Proposed AO Administration structure



ALL PROPOSALS SUBJECT TO CONSULTATION

The disclosure of this document would, or would be likely to, prejudice the commercial interests of TfL, its subsidiary companies and/or other parties. This document reflects ongoing work and discussions within TfL on options for the future of TfL/LU. It is not intended to reflect or represent any formal TfL/LU views or policy. Its subject matter may relate to issues which would be subject to consultation. Its contents are confidential and should not be disclosed to any unauthorised persons.

EVERY JOURNEY MATTERS